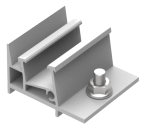


Components



Back leg



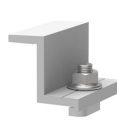
Front leg



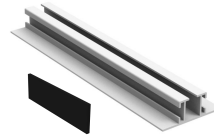
Click Mid Clamp



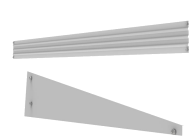
Click End Clamp



Concrete Clamp



Base beam



Windshield

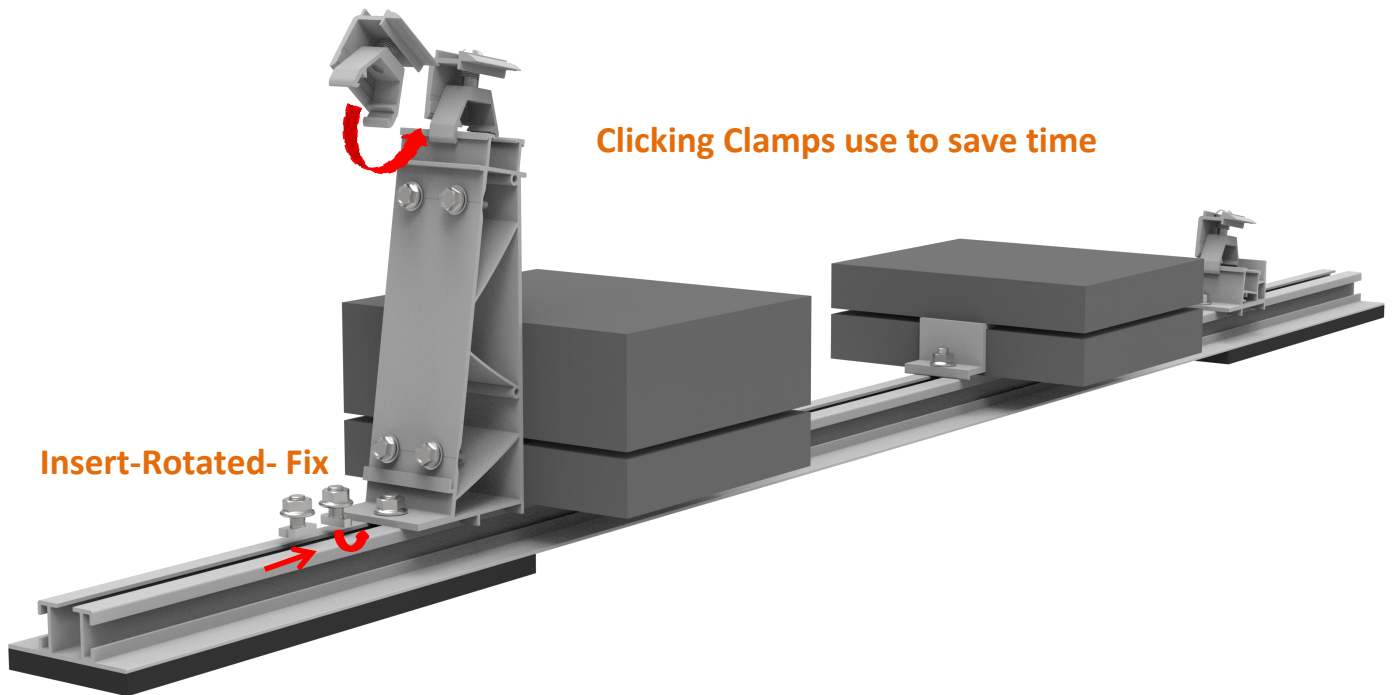


Ballast Tray

Advantage

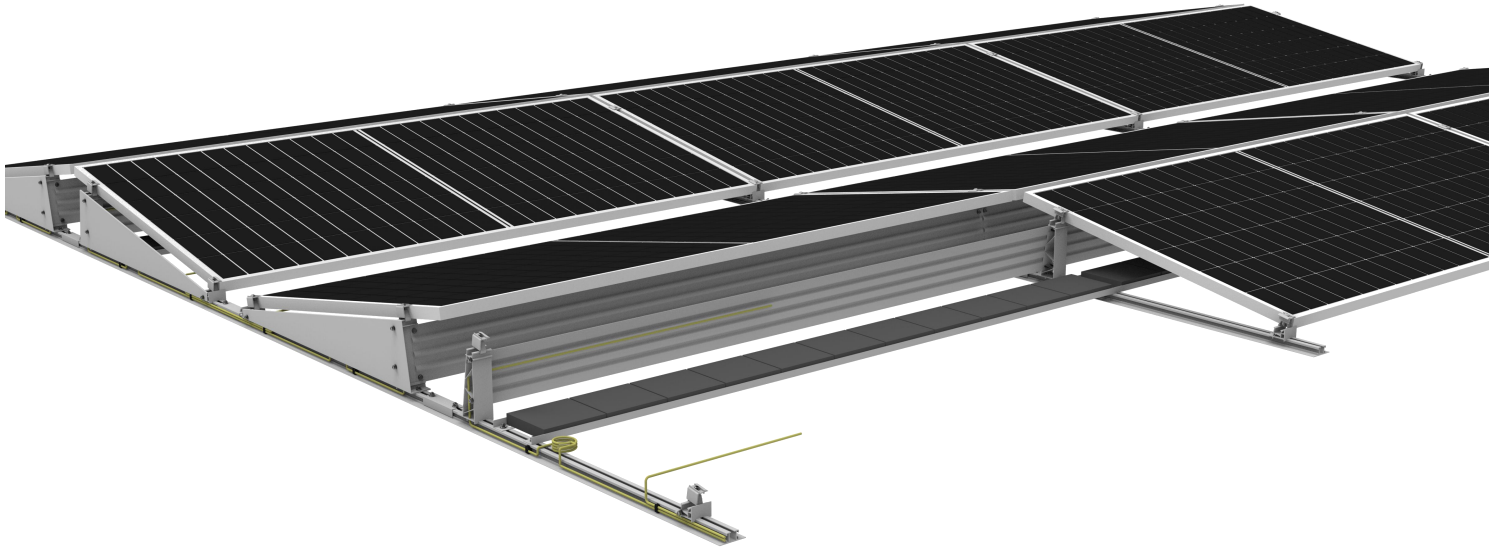
- North to South Installation
- Clicking clamps to fix solar panels
- T bolt to fix ballast legs, easy to insert into base beam
- Low ballast required and easy to fix with clamps
- Strong force loading to load big modules
- Universal mid and end clamp for 30 to 40 mm thickness modules

Unique Feature

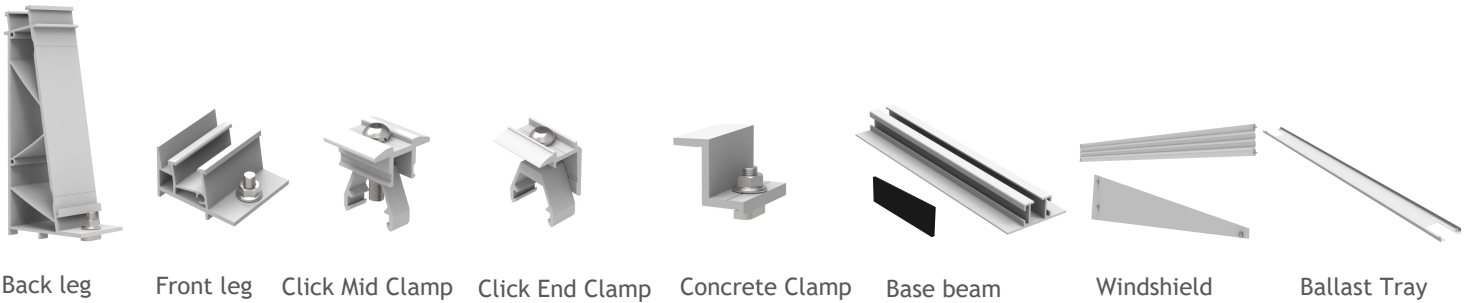


Technical Data

Product name	Arch6.0 NS System Mount System
Application	Flat roof like TPO,EPDM,PVC
Inclination	10 deg or customized
Material	Aluminum 6005 T5
Finish	Anodized clear, average 12um
PV module	Framed
Module size	Big modules
Module orientation	Landscape
Module direction	North to South



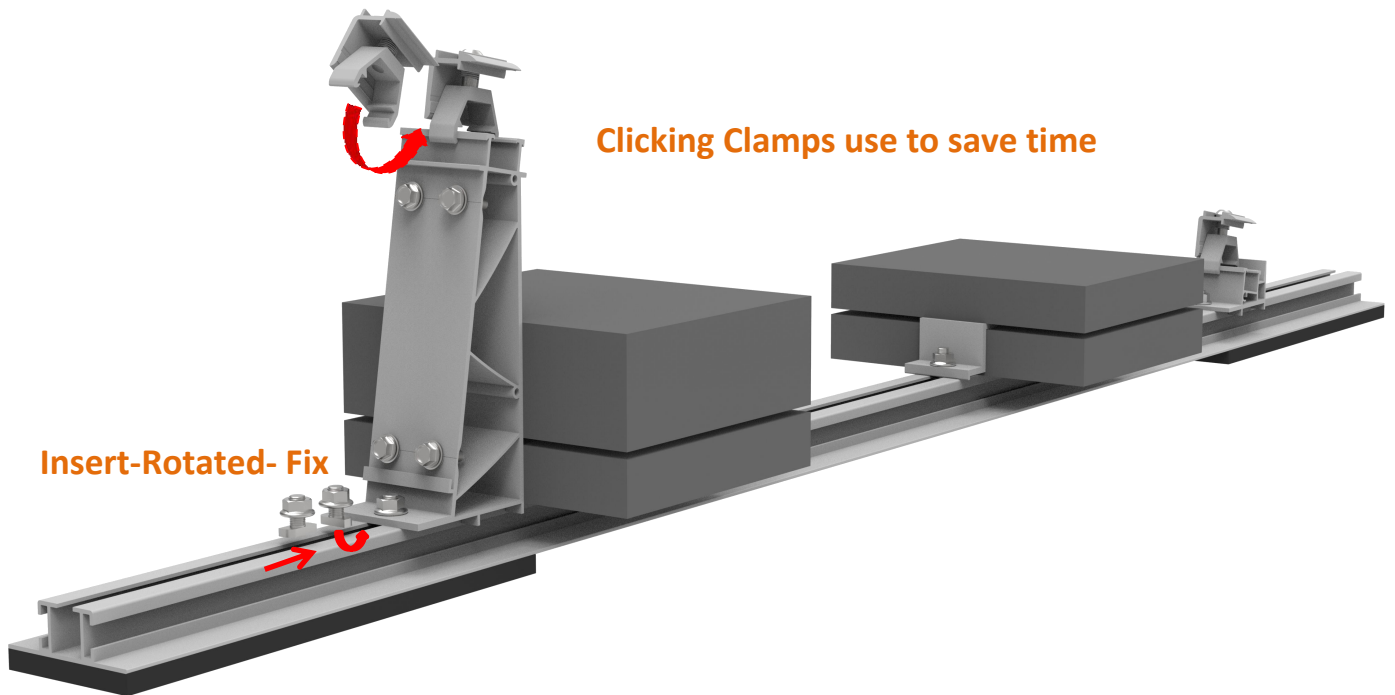
Components



Advantage

- West to East Installation
- Clicking clamps to fix solar panels
- T bolt to fix ballast legs, easy to insert into base beam
- Low ballast required and easy to fix with clamps
- Strong force loading to load big modules
- Universal mid and end clamp for 30 to 40 mm thickness modules

Unique Feature



Technical Data

Product name	Arch6.0 WE System Mount System
Application	Flat roof like TPO,EPDM,PVC
Inclination	10 deg or customized
Material	Aluminum 6005 T5
Finish	Anodized clear, average 12um
PV module	Framed
Module size	Big modules
Module orientation	Landscape
Module direction	West to East