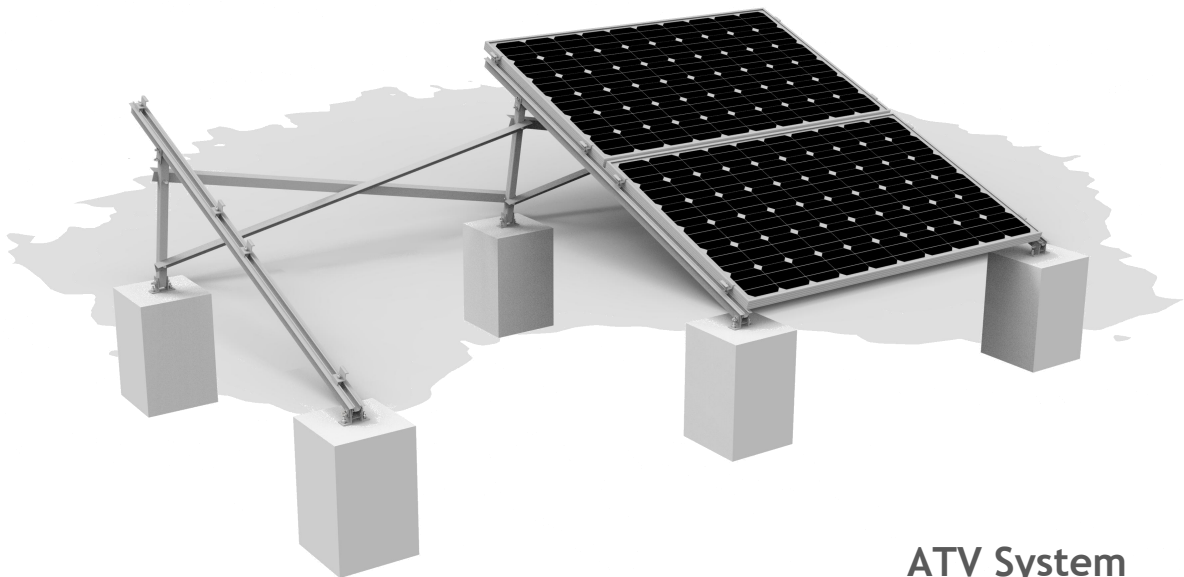
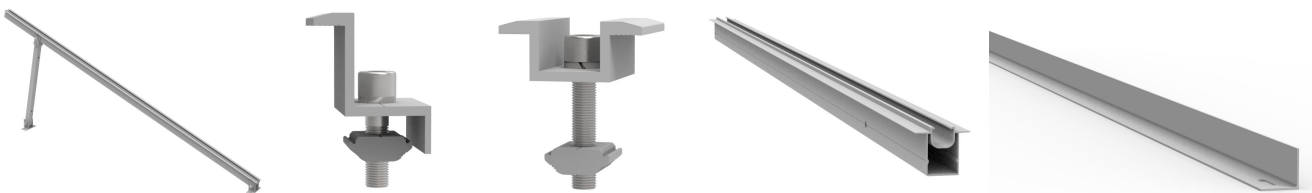


WOCHN ATV solar mounting system is a triangle system for landscape solar installation on flat roof. It is easy and fast installation of PV panels on flat roofs and surface. The triangular design provides a stable, reliable and strong base for the system. It's versatile of the application which ballasted with concrete foundation or directly connected with flat concrete roofs. This system supports a wide range for adjustable angle through to adjust the distance between front base and back base of the leg to achieve the tilt adjustable. The adjustable angle range is 10-60 ° available. This system is rail-less and easy to place solar module on the ATV leg beam's two side. The longer module arrays placed, the cost more cost-effective. And also resisting the extreme wind load and snow forces experienced over a rooftop lifespan. Every component in the system is made with aluminium and stainless steel to ensure complete corrosion resistance and longer lifespan.



ATV System

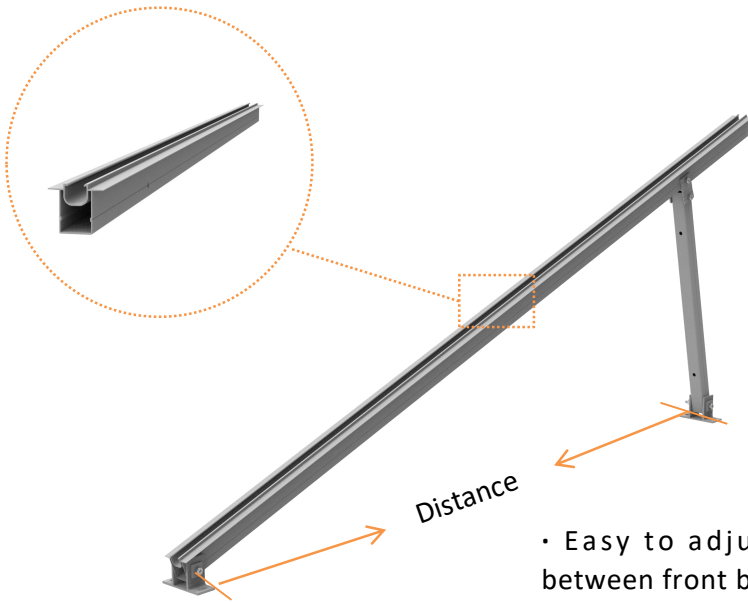
Components



Advantage

- Unique beam designed, one beam for place modules on two side
- Pre-assembled ATV legs for easy and quick to install
- Adjustable tilt angle from 10 to 30 degree, flexibility for different inclination
- Flexibility for long or short rows arrays
- Flexibility for 1/2/3/4 panles landscape arrays

Unique Feature



- Item NO.: WQ-ATV-1030
- Angle Adjustable Range: 10 to 30 deg
- Workable for modules:
 - Length: 1960 to 2400 mm
 - Width: 900 to 1200 mm
 - Thickness: 30 to 40 mm

- Easy to adjust the distance between front base and back base to come to the inclination required.

Technical Data

Product name	ATV Mount System
Application	Flat concrete roof
Inclination	Standard or custom
Material	Aluminium 6005-T5
Finish	Anodized clear, average 12um
PV module	Framed
Module size	Small and Big mc
Module orientation	2/3/4 modules landscape
Module direction	South, North